

**COOPER**

**Bussmann®**

Productivity Through Protection™

# Circuit Protection Solutions

## Product Guide



# Cooper Bussmann: A Global Company

Cooper Bussmann, a division of Cooper Industries, is the leading source of circuit protection solutions in the global market place. Our solutions are listed for use around the world including meeting agency requirements and international standards, IEC, VDE, DIN, UL, CSA, BS...

## Worldwide Presence

Cooper Bussmann worldwide headquarters are in St Louis, Missouri (US) and European headquarters in Burton-on-the-Wolds, Leicestershire (UK)

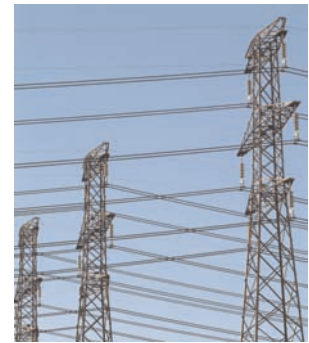
We have manufacturing plants in the US (Black Mountain and Goldsboro - NC, Chicago - IL, Ellisville - MO, Boca Raton - FL), in Mexico (Juarez and Mexico City), in UK (Workington and Burton-on-the-Wolds), Denmark (Copenhagen), India (Pondicherry), Costa Rica (San Jose), Brazil (Itu)

We employ more than 5,000 team members worldwide.



## Global Applications and Products

We provide the industry with more than 41,000 fuse types covering the most extensive circuit protection solutions for a wide range of applications: residential, industrial, motor protection, power conversion, medium voltage power distribution, telecommunications, network equipment, electronics and automotive.



## Global Capabilities and Support

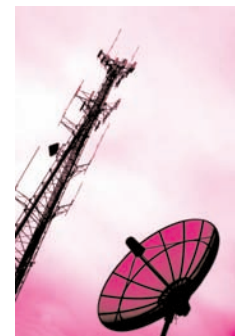
### Customer satisfaction team

Our customer satisfaction teams are market segmented with language capabilities to ensure a quality ordering experience and provide you detailed answers to every inquiry. Whether you are communicating with us via: internet, phone or fax, you are sure to receive quick, intelligent and responsive service satisfaction.



### Worldwide distribution

Wherever you are in the world, Cooper Bussmann, can guarantee the right products will be delivered on time, right at your doorstep. Cooper Bussmann has multiple ways to deliver you the goods on time, from the computerised distribution centre in St Louis (US), from the Burton-on-the-Wolds logistic centre or from your local distributor.



### Applications engineering team

In the spirit of surpassing customers expectations, the mission of our application engineering teams is to keep customers on the cutting edge with training and technical services. Our team is standing by and ready to help you with technical products inquiries, product cross-referencing, and trouble-shooting. But also about worldwide standards, current code changes, testing standards and safety requirements.



Contact Us:

**EUROPEAN HEADQUARTERS**

Cooper Bussmann (UK) Ltd  
Burton-on-the-Wolds  
LE12 5TH  
United Kingdom  
[www.cooperbussmann.com](http://www.cooperbussmann.com)  
Tel: 00 44 (0) 1509 882 737  
Fax: 00 44 (0) 1509 882 786

**WORLD HEADQUARTERS**

Cooper Bussmann Inc.  
St Louis, Missouri 63178  
USA  
636-394-2877  
[www.cooperbussmann.com](http://www.cooperbussmann.com)

Web services

[www.cooperbussmann.com](http://www.cooperbussmann.com)

The Cooper Bussmann website makes available free information and other resources that include:

- Product data sheets for complete technical information on Cooper Bussmann products
- Online catalogs for the latest United States and European Products
- Safety BaSICs™ for the essentials of electrical safety
- Training modules for increasing skill levels of customers and end users
- Cross referencing to find the correct Cooper Bussmann replacement for a competitor's fuse

---

**Your authorised Cooper Bussmann Distributor is:**

## Low Voltage Fuses and Fusegear

### NH DIN Industrial fuse links and bases

- Conforms to IEC 60269 & VDE 0636
- General purpose full range & Motor protection applications (Class gG/aM, gTR)
- Rated breaking capacity - 120kA, current rating from 2A to 1600A
- Available with Dual indication in sizes C00(000), 00, 1, 2, 3 (excluding size 4A)
- Fuse Holders available for all fuse-links sizes



### D & DO Low voltage fuse system

- Conforms to IEC 60269 & VDE 0636
- Rating breaking capacity - 50kA, current rating from 2A to 100A
- Available in 7 sizes: DI, DII, DIII, DIV, D01, D02, D03
- Fuse bases for panel and Din Rail mounting with accessories available screw caps, gauge rings,....



### British standard fuses and fuse holders

- Conforms to BS88 Part 1, 2 & 6, IEC 60269 Part 1 & 2, ASTA Certified
- General purpose full range protection - class gG & gM
- Ratings of 415V, 550V & 660 Vac, current rating from 2A to 1250A
- Fuse Holders available for all fuse-links sizes up to 100A



### IEC Cylindrical fuses and holders

- Conforms to IEC 60269 Standards
- General purpose full range protection (Class gG) and motor protection (Class aM)
- Rated breaking capacity of 20kA to 120kA, rated at 400Vac to 690Vac
- Available in sizes 8x32, 10x38, 14x51, 22x58mm
- Fuse Holders available for all fuse-links sizes



## Low Voltage Fuses and Fusegear

### Type J - Feeder pillar

- Designed for use with wedge type fuse carriers
- Type J Fuses are available in cylindrical slotted or non slotted tag versions
- Comply with BS88 Part 5 requirements
- Available in 76mm, 82mm and 92mm centres



### House service cut-out

- Asta certified & tested in accordance with BS1361
- 33kA breaking capacity
- Available in 2 diameters -22.2mm & 30.2mm
- Both available in ratings up to 100A at 415Vac



### North american standard

- UL Listed and CSA Certified
- Rated breaking capacity of 100mA to 6000A, rated from 125 to 600Vac
- Sizes: Midget, Class CC, Class RK5, RK1, ClassCC, G, J, K5 & H, L, RK1, RK5, T, Plug Top Fuses
- Modular fuse holders (finger protection) for Midget and Class CC fuses, Finger safe protected fuse base for class J fuses and a wide range of



## High Speed Fuses and Fuseholders

### Square body

- Conforms to EN CE, IEC 60269 - 1&4, DIN 43620 & 43653, UL, CSA, and CCC
- Vast range of bases and micro switches with galvanic isolated contacts for use in normal and hazardous environment
- 10A - 10000A, 200V - 11000 V AC and DC, rated breaking capacity - 300kA
- Sizes 0000, 000, 00, 1, 2, 3, 4, 5 also Double 3, Double 4 and Quatro 3
- Customised design



### British standard

- Conforms to BS88 Part 4, IEC 60269-4
- Current rating from 6A to 710A, rated at 240V & 690Vac, rated breaking capacity - 200kA
- Trip indicator fuselinks available and micro switch for remote indication



## High Speed Fuses and Fuseholders

### IEC Cylindrical - Ferrule style

- Conforms to UL/CSA
- Current rating from 1A to 100A, rated at 700V, rated breaking capacity - 200kA
- Sizes 6x32, 10x38, 14x51, 14x67, 21x51, 22x58, 20x127, 25x146



### North American

- North American style fuses provide an excellent solution for medium power applications
- Conforms to UL/CSA
- Current rating 1 to 4,000A - 130 to 1000C ac and 130 to 800V dc



## Medium Voltage Fuses

### DIN Fuse-Links

- Conforms to DIN 43625, EN IEC 60282-1, VDE 0670-4
- Ratings: 6.3 to 400A, rated from 3.6 to 38kV
- Full range, back up and motor protection applications



### Motor Start Fuse-Links

- Conforms to UL, IEC DIN 43625 and British Standard
- Ratings: 6.3A to 400A, rated from 2.75kV - 7.2kV



### Oil Fuse-Links

- Conforms to IEC 282-1, BS 2692-1 and ESI standard 12-8
- Ratings: 6.3 to 200A, rated from 3.6 to 24kV
- Fitted with pyrotechnic striker pin



### Voltage & Auxiliary Transformer Fuse-Links

- Conforms to BS 2692-1 and IEC 60282-1
- Ratings: 3.15A, rated from 1 to 36kV
- Use in the primary side of voltage transformers

